

# Prelude

Johann Sebastian Bach BWV 999  
bearbeitet von Ansgar Krause

4

7

10

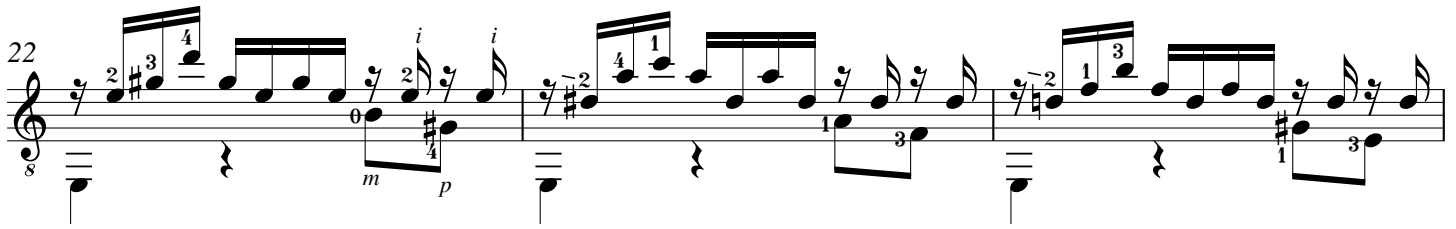
13

16

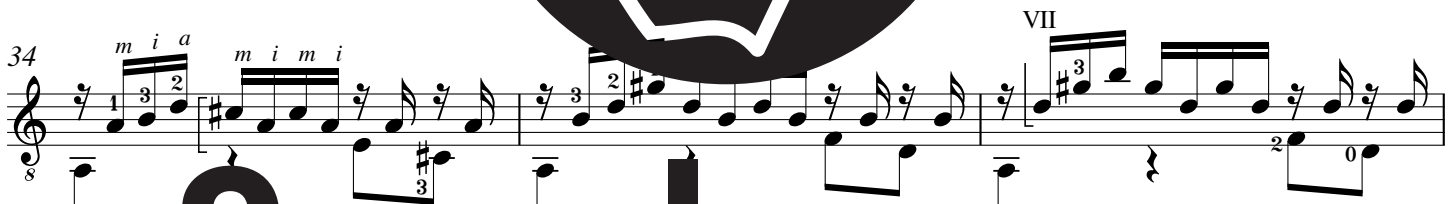
19

V

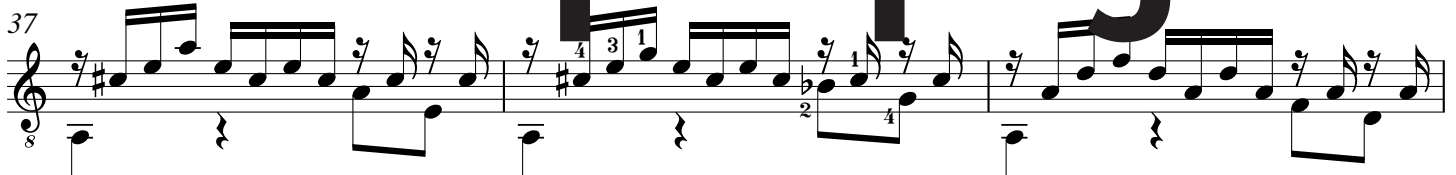
VII



# Leseprobe



# Sample page



## Fuga

Johann Sebastian Bach

nach BWV 1000, 1001, 539

bearbeitet von Ansgar Krause

8

4

7

9

12

15

18

21

III

VII

II

*a m i p p i a m i*

*i p i p i p i p*

**Leseprobe**

**Sample page**

0404  
[tr]

24

27

30

34

38

42

44

46

48

**Leseprobe**

**Sample page**

1719

VII

*m i a m a m a*

*i m a m a m i*

*i p i m i p i*

*i m a m a m i*